



OUR SAVIOUR
LUTHERAN SCHOOL

learning loving living laughing

iMessage on iPads



What is iMessage?

iMessage is Apple's built-in instant messaging (IM) service. It lives inside the Messages app on iPad (see icon above) allowing the user to send text, picture, video, and voice messages to anyone else using an iPhone, iPad, or Mac.

What is the school's Recommendation?

We understand that there are reasons why you may feel it's useful for your child to have iMessage active on their iPad; however, it is not one of the recommended apps from the school, and is not used as an app for learning at school. In light of this, we recommend that you disable iMessage on your child's iPad.

An Apple ID and password must be used to sign in and activate iMessage, the e-mail address or phone number associated with the Apple ID will then appear and be referenced with any message that is sent. You If your child is using iMessage, it is essential that they have asked your permission to use the Apple ID you have set up for them, and have had a discussion with you regarding boundaries and appropriate use of messaging online. If this conversation has not happened, please review your child's messages with them, discuss your expectations, the school's policy, and consider following the school's recommendation that it not be active.

What is the School's Policy?

Student's who have inappropriate content on their iPad, including content in iMessages that they have sent, or who have sent an electronic message at school without the teacher's permission are in breach the iPad User Agreement, and will be subject to the consequences outlined in the agreement.

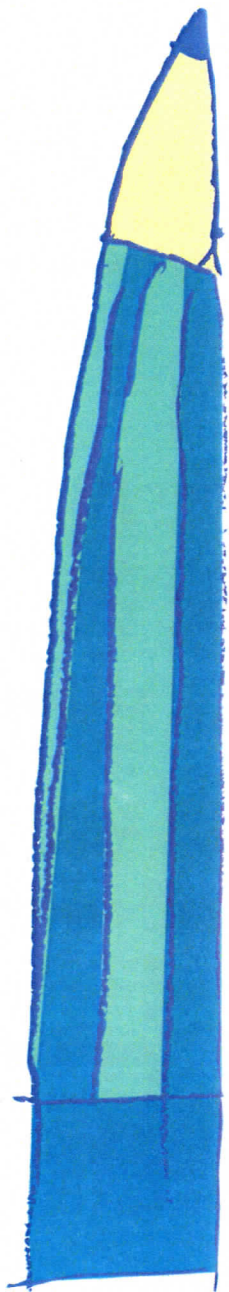
How do I disable iMessage?

Disabling iMessage on the iPad is a two step process:

1. Disable iMessage (Turn it off) on the settings Menu.
2. Lock the ability to change account settings. This is done under Restrictions settings. By doing this, your child cannot turn iMessage back on. Only those with the Restrictions password (mom or dad) can do so.

A detailed how-to guide with screen shots can be found here:

<http://www.bewebsmart.com/ipod-ipad-iphone/how-to-restrict-imessage/>





OUR SAVIOUR
LUTHERAN SCHOOL

learning loving living laughing

The pictures below outline how to turn off iMessage from the settings menu, and how to use your restrictions passcode to disable account changes so that iMessage cannot be turned back on.

Whether it's out on the playground, in the classroom, at an after school activity or online, we all want our children communicating in ways that are positive and wholesome. Thank you for your support in this endeavor.

For further information on iMessage go to: <https://support.apple.com/en-au/HT201287>
Or AppleCare Support: 1300 321 456

