



OUR SAVIOUR  
LUTHERAN SCHOOL

learning loving living laughing

## iPad Restrictions Policy



### What are Restrictions?

You can enable Restrictions, also known as Parental Controls, on iPhone, iPad, and iPod touch. Restrictions stop the user from using specific features and applications.

### Using Restrictions

The control of Restrictions is contained in the Settings app on the iPad.

Tap *Settings* > *General*

Tap *Restrictions*

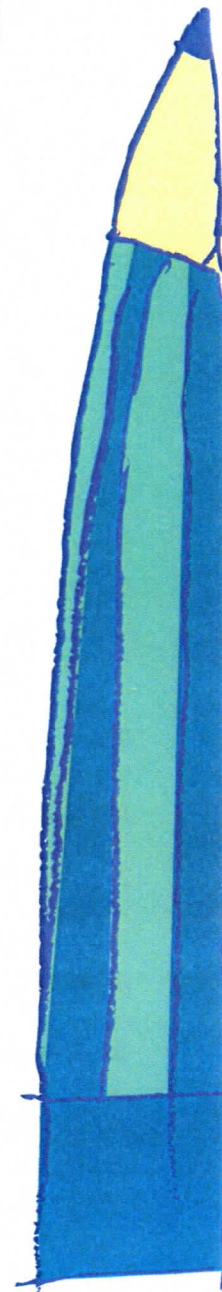
Tap *Enable Restrictions* and enter a passcode. This passcode will be required to make changes to these settings or to disable Restrictions. DO NOT share this passcode with your child/children. (If you lose or forget a restriction passcode, you will need to perform a factory restore to remove it.) Please note that the Restrictions passcode should be different from the passcode used to unlock the iPad (which should be known by your child/children).

You can restrict access to the following applications and features on the device:

- Safari
- Camera (also disables FaceTime)
- Siri
- FaceTime
- Airdrop (is used to share and submit student work)
- Carplay
- iTunes Store
- Apple Music
- iBooks Store
- Podcasts
- Installing apps
- Deleting apps
- In-App purchases (can also be linked to Touch ID)
- Multiplayer Games

You can prevent access to specific content types:

- Music and podcasts
- Movies
- TV shows
- Books







**OUR SAVIOUR**  
LUTHERAN SCHOOL

*learning loving living laughing*

- Apps
- Siri
- Websites
- You can adjust the time necessary before a password is required to purchase content

### Essential School Recommendations for Parents

The following Restrictions must be implemented before a child can bring their iPad to school and connect to the school's Wi-Fi network, we also suggest these restrictions for home use.

- FaceTime: Off
- Rating for: Australia
- In-App purchases: Off
- Music, Podcasts and iTunes: Clean
- Movies: PG (or G depending on age)
- TV Shows: PG (or G depending on age)
- Books: Restricted
- Apps: 9+ (if student is 12 then 12+ with parent permission)
- Siri: Restricted (disallow Explicit Language)
- Websites: Restricted (select Limit Adult Content)
- Game Centre: Disallow Multiplayer Games and Adding Friends

These recommendations are designed to not impact on teaching and learning activities while at the school. If parents vary these recommended settings, please note that this will limit the usefulness of the iPads at school.

### Additional Information

If your child's iPad is missing a particular application or if a certain feature is not available, it is likely due to a Restrictions setting.

Symptoms can include:

- App missing from the Home Screen (such as Safari or Camera).
- Feature or service unavailable (such as Siri or Location Services)
- Setting missing or dimmed (such as Mail, Contacts, Calendar, or iCloud)

### For Further Assistance

<http://support.apple.com/kb/ht4213>  
or AppleCare support: 1300 321 456

\*To disable iMessage, see the School's iMessage Policy

